



# AP-100 Smart Wi-Fi Access Point

High Performance and Carrier-grade 802.11n Capable, with Bandwidth Control and Remote Management Capabilities



## FEATURE

- Built-in for carriers including per client/VAP based bandwidth control, remote web-based management and client association status
- $\pm 45^\circ$  cross-polarized patch antennas and it provides 3dB more gain as compared to other V-H polarized CPEs
- High performance antenna with 20 dB front-to-back ratio, which is on average 5 dB better than others in directional transmission without picking up unwanted signal.
- Support around 40-50 stations (internal real site testing result) and much higher performance than traditional AP. Perfect for telecom carrier
- One-piece weatherproof chassis compliant to IP55 standard for direct outdoor installation
- 8-level LED for easy alignment in the strongest signal direction
- Increase signal strength for both NLOS and LOS coverage areas
- Improve data transmission rate and throughput utilization of base station

## DESCRIPTION

The Handlink AP-100 Smart Wi-Fi Access Point is designed as an essential component in the Handlink Hotspot solution to extend outdoor/indoor Wi-Fi coverage and increase last mile coverage depending on site survey for broadband connectivity.

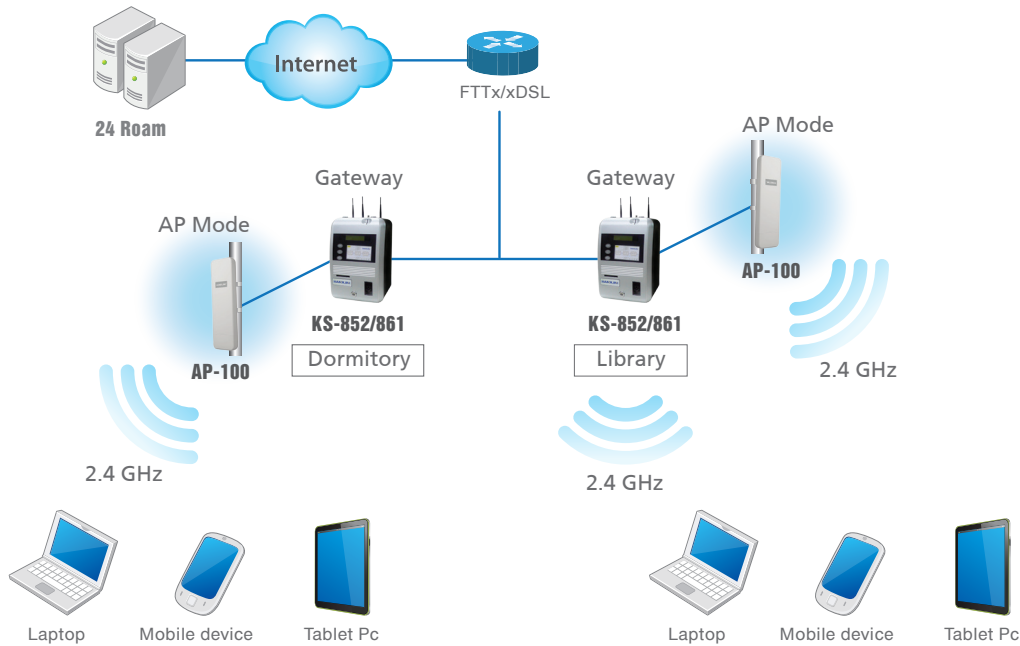
With its powerful built-in smart antenna, its signal processing technique can track and locate the antenna beam on the mobile/ target to reduce Interference signal and boost the signal strength. The AP-100 also improves the link budgets as much as 16 dB and significantly enhanced network coverage and capacity in Hotspot Solution.

The AP-100 is designed and purpose-built for service operators. Its built-in traffic shaping based bandwidth control mechanism allows the control of uplink and downlink traffic throughput on a per-client or per-VAP basis. A full set of networking and management features are available to meet carriers' requirements.

The AP-100 is a key component in wireless broadband access provisioning. It can be installed outdoors by the side of a window, mounted to a wall, at the rooftop of a building or placed at the desktop inside for fixed broadband access provisioning. The AP-100 can also be used as a standalone Wi-Fi Access Point for smaller networks supporting 802.11b/g/n clients.

The Handlink AP-100 is the most cost effective and versatile way to replace traditional last mile access. It can be used to build a high capacity Wi-Fi system that achieves the fastest ROI for both telecom operators and enterprises. The AP-100 is also an important complement in Handlink's Hotspot Solution to increase coverage and improve Wi-Fi performance. It perfectly works with Handlink KS-852/861 and ISS-7000 v2 as public Wi-Fi solution to extended long distance application.

## APPLICATION



## SPECIFICATION

SOFTWARE	
Wireless Interface	Standard IEEE 802.11b/g/n Transmit and Receive Diversity Automatic Channel Selection* Site Survey Channel Scan
Wireless Operation Range	Up to 600 meters (LOS Access) Up to 20 km (LOS Bridge)
Wireless data Rate	Up to 300Mbps
Operating Mode	AP/CPE/Bridge*/Repeater
Networking	8 Multiple SSID/ Virtual AP Bandwidth Control/ VAP/ Client DHCP Client/ Server Dynamic NAT Port Forward Preferred AP Association Click to Connect Auto ACK Timeout Calculation by Distance Input Web Based Antenna Alignment Tool 2 User Access Levels for Web Login(3Levels) WMM*
Security	MAC based Access Control SSID Suppression
Authentication	Authentication Open system, Shared key, WPA/ WPA-PSK WPA2/ WPA2-PSK 802.1x, PEAP Encryption WEP, TKIP, AES
Management	Web-based Administration Tool Web-based Antenna Alignment Tool Telnet Management (SSH)* Remote Firmware Upgrade (HTTP) SNMP v2c Wi-Fi Client Association Status Wireless Management System Support
HARDWARE	
Antenna	Built-in 2.4 GHz Antenna: 10 dBi Dual Slant ±45° Patch 3-dB Horizontal Beamwidth: 70° 3-dB Vertical Beamwidth: 30° Front-to-back Ratio: -20 dB (Max.)

RF	Operating Frequency : 2.412 – 2.472 GHz (Ch 1-13) FCC Transmit Power : 29 dBm (Max.)/ 26 dBm (Per Chain) CE (Max. Average EIRP output power) : 11n 20MHz 19.98 dBm/ 40MHz 19.99 dBm 11b 19.79 dBm 11g 19.98 dBm Receiver Sensitivity (Typical) : 802.11b 11 Mbps -91 dBm /1 Mbps -96 dBm 802.11g 54 Mbps -81 dBm /6 Mbps -95 dBm 802.11n HT20 -95 dBm /HT40 -92 dBm
Network Interface	10/100 Mbps Ethernet Port
LED Display	Main Power Status Ethernet Status 8-level Signal Strength (User configurable)
Power Supply	Power Source : PoE Injector (18V) Power Consumption : 6 W (Typical) / 8W (Max.)
Dimension	(L)220 x (W)80 x (D)24 mm (excluding mounting) Weight 0.4 kg
Mounting	Desktop, Pole, Wall or Window-mounted
Environmental Specification	Operating Temperature : -20 °C to +55 °C Storage Temperature : -40 °C to +80 °C Humidity : 5 – 95% (Non-condensing) Wind Loading : 145 km/h (Operational)/ 200 km/h (Survival) Weatherproof : Outdoor UV Stabilized Plastic IP55 Compliant
Certification	FCC/CE/GOST-R/ NCC*/ NTC*

\* Features will be available in future release



## HANDLINK®

HANDLINK TECHNOLOGIES INC.

Tel : +886 3 564 5166

Fax : +886 3 564 3922

Website : www.handlink.com.tw

E-mail : handlinksales@handlink.com.tw

4F, No. 3, Prosperity Rd. 1, Science-Based Industrial Park, Hsinchu 300, Taiwan, R.O.C.

Copyright © 2013-2016 Handlink Technologies Inc. all Rights Reserved.